



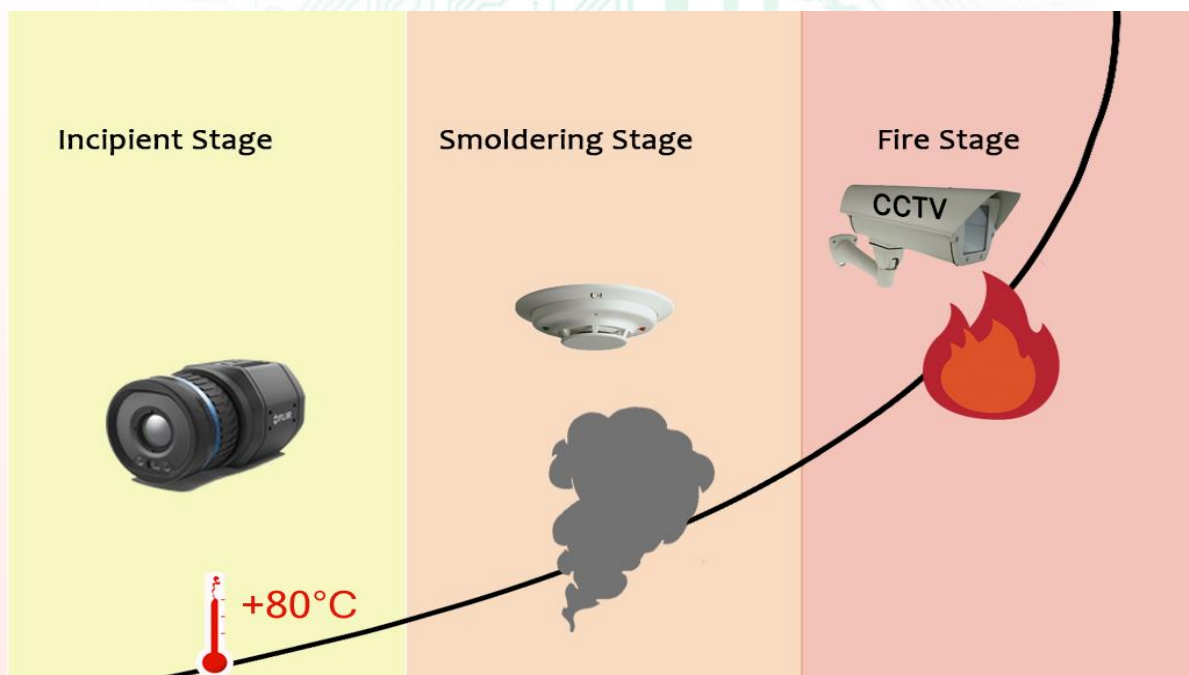
# bcbFireScan<sup>®</sup>

Powered by **bcbMonitor 4.0**<sup>®</sup>

## Early Fire Detection

A fire could have serious consequences by causing significant damage to property, equipment and machines of a company and neighboring buildings and at the same time, damage and injury to people (burns, inhalation of toxic fumes and vapors) that can even cause loss of human life (workers, neighbors, emergency personnel, etc.)

In fire detection, every thousandth of a second counts. **bcb** understands this and takes the challenge to prevent these disasters on the industry. Our proposal: **bcbFireScan**<sup>®</sup>, is the most complete and versatile system for fire detection. Based on our thermographic smart monitoring system **bcbMonitor 4.0**<sup>®</sup>.



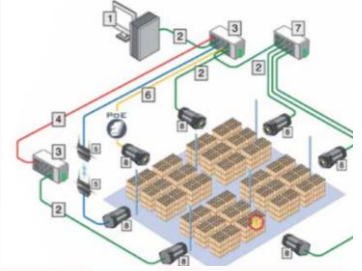
Official dealer & integrator 

# Early Fire Detection



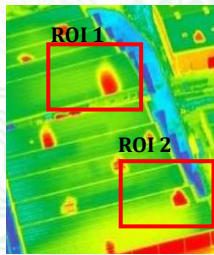
## Continuous monitoring

- Day and night: no light required
- Real-time monitoring
- Generation of alarms
- Image and video capture



## High Connectivity

- Independent and centralized control of each camera
- Communication to PLCs and corporate databases
- Email and SMS alerts
- Access from mobile and PC using Web Services
- ONVIF and MQTT compliant



## Smart detection

- Selection of monitoring and exclusion zones
- Remote directional control using pan-tilt unit
- Automatic elimination of false positives (electric motors, forklifts and others)

## Industries

- Paper and Cardboard
- Wood
- Oil & Gas
- Coal
- Urban waste
- Etc ...



**bcb**

Fernando el Católico 11  
28015 Madrid  
Tel. (+34) 91 758 0050

[info@bcb.es](mailto:info@bcb.es)

[www.bcbingenieria.com](http://www.bcbingenieria.com)

**bcb México**

Homero 538-303  
Polanco V sección  
Del. Miguel Hidalgo  
11560 Ciudad de México  
Tel. (+52) 55 9183 0547 Ext. 7547  
Sucursal Monterrey Tel. (+52) 81 1041 2616

[info@bcmex.com](mailto:info@bcmex.com)

[www.bcbingenieria.com](http://www.bcbingenieria.com)

